

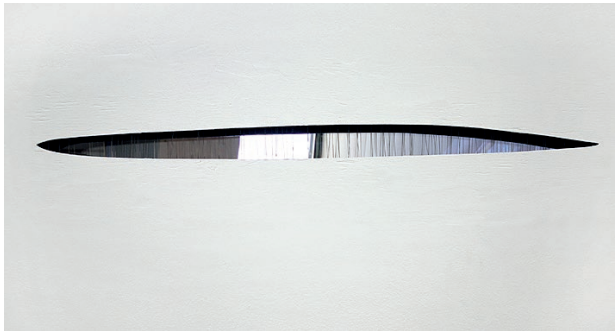
Artists Invited to Contribute to the Life on a Leaf House



Kari Juutilainen (Kuopio)
The Cleaner
Light fixture in the kitchen.



Joonas Mikola (Rovaniemi)
Buxo Birdhouse (Yellow)
3D graffiti. Hanging outside the house.



Yuichiro Nishizawa (New York)
Fir tree needle
A hole through the wall shaped like a fir tree needle.



Eileen Hutton (USA/Ireland)
Blue Tit Nest #10
Sculpture made in collaboration with birds.



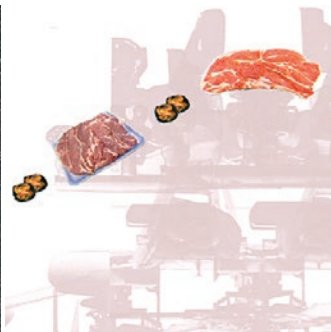
Pierre St-Jacques (New York)
Grand Central Station
Video work under a slit in the floor.



Pertti Toikkanen (Järvenpää)
Wheat Hat
Light fixture in the kitchen.



Leah Oates (New York)
Printed photographs from the *Transitory Space Series*.



Burtonwood & Holmes (Chicago)
Wallpaper pattern for the toilet on the first floor.



Alice George (Chicago)
Working Play Song poem on a roll of paper to be found in a hole in the concrete wall in the kitchen.



Amy Youngs & Kenneth Rinaldo (Columbus Ohio) *Sprout Hous*
Proposal for a sprout growing lamp.



Ismo Kajander (Helsinki/Paris)
Pea pod-sandbox
Proposal for a sandbox for children.



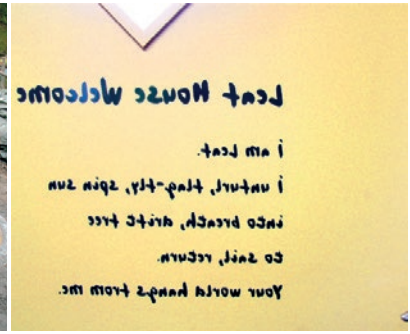
Jyrki Siukonen (Tampere)
Stuttering Modernist Shit
Assemblage made for the toilet wall.



Trudi Entwistle (Hebden Bridge, UK)
Apple Heart
 Benches/sculptures outside the house. Design of the earth mounding around the house.



Frank Brümmel (Turku)
Bee Dance
 Stone paving with ornate pattern outside the front door and concrete outdoor table.



Robert Powell (York, UK)
Leaf House Welcome
 A welcome poem on the entrance door.



Jan Kenneth Weckman (Turku)
Hot Lines
 Drawing on the surface of the heat preserving oven.



Susanna Peijari (Turku)
The Dance
 A relief/painting under the bridge crossing the living room.



Johanna Kunelius (Porvoo)
The Lions on the Sofa and The Lion and the Leaf
 Textile patterns for the sofa and pillows in the living room.



Karin Andersen (Bologna)
Science Kitchen
 A digital image for the kitchen working table surface.



Shawn Decker (Chicago)
Sound Bridge
 Sound work for the railing on the bridge inside the living room. Outdoor changes in wind and light affect the sound.

During the time we have lived in the house, some of our friends have donated works, which will remain in the house permanently. Sussi Henriksson's expressive ceramic vase is on the floor in the living room. The philosophy toilet on the first floor boasts a great collection of works: Jan Kaila's portrait of Elis Sinistö, Kimmo & Noora Schroderus' 'Syö kakkaa' relief, Stefan Lindfors' dragon-sculpture-cum-wine rack, Antero Toikka's Vine Grape Sculpture, Clara Entwistle's drawing of the house, Aska Irie's drawing of the house and the onion sauna, and Alice George's view of the harbour, painted in the Bluebell.